

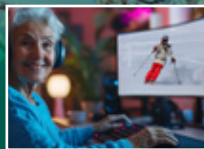
# What's On

Your bi-monthly guide to what's on at **Belong Newcastle-under-Lyme** Feb / Mar 2026

**A Blooming  
Good Afternoon**  
Flower arranging  
workshop



**Get Active!**  
Winter  
Games fun



## Pancake Day

Celebrate Pancake Day with us on Tuesday 17 February from 10am in Samuel Bell's Tea Room, where you can enjoy freshly made pancakes served just the way you like them.

Choose from a delicious range of toppings to create your perfect pancake and enjoy a relaxed, friendly atmosphere. The cost is £3pp, there's no need to book, simply come along and join in the fun. Call 01782 986300 for details and to book.



## Port Vale trip

Join us for an exciting football trip to watch Port Vale take on Reading on Saturday 21 February. This great day out for football fans costs just £20pp, with admission included.

Spaces are limited, so please book and pay at reception as soon as possible, as places will be allocated on a first-come, first-served basis. We'll be leaving the village at 1:30pm and returning around 6:30pm.



## Mother's Day

Treat Mum to a delicious Mother's Day Roast in The Bistro on Sunday 15 March from 12noon.

Enjoy a beautifully prepared roast in a warm and welcoming setting, the perfect way to celebrate together. Make Mother's

Day extra special with great food and great company. Prices start from £8.10: booking required, please reserve your table in The Bistro.



## St. Patrick's Day



Celebrate St Patrick's Day with us on Tuesday 17 March at 5pm in The Bistro, where we'll be hosting a special themed dining experience filled with great food and a lively, festive atmosphere. Enjoy a memorable evening inspired by St Patrick's Day for just £15pp. Booking can be made in The Bistro or Reception; early booking is recommended to avoid disappointment.

## The Dorothy Clive Gardens

Join us for a relaxing trip to The Dorothy Clive Gardens on Friday 13 March, departing the village at 10am and returning at 2pm. Spend the day exploring the beautiful gardens and charming gift shops, with plenty of time to enjoy the scenery at your leisure. Tickets are £15, including return transport and entry. Spaces are limited, so we recommend booking early at reception to avoid missing out.





**Treat Mum**  
Enjoy a wonderful  
Mother's Day Lunch



**Pancake  
Day**  
Visit Samuel Bell's  
Tea Room



**BELONG**  
NEWCASTLE-UNDER-LYME

*We welcome members of the whole community*

## Weekly Activities

### Monday

**11am** Walking club

**2pm** Musical Mondays (The Venue) £2

### Tuesday

**11am** Arts and crafts (Creative Studio) £2.50

**2pm** Pub games (Old Pomona Inn) £2

**6pm** Church service (monthly, 1st Tuesday, The Venue)

### Wednesday

**11am** Chair-based exercise (The Venue) £3

**2pm** Cooking through time  
(Samuel Bells) £4

### Thursday

**11am** Book club (Reminiscence Lounge) £5

**2pm** Knit and natter  
(Reminiscence Lounge) £2

**6pm** Art class (monthly, 2nd & 3rd Thursday, The Venue) £7

### Friday

**11am** Chair-based exercises (The Venue) £3

**2pm** Film club (The Venue) £2

### Saturday

**6pm** Prize bingo (monthly, 3rd Saturday, The Venue) £6

## Winter games

We are delighted to welcome Julie, our new Exercise Specialist, to the village. From Friday 6 February until Friday 20 February, Julie will be hosting a series of winter games-themed activities, including fun and inclusive sessions such as themed chair-based exercises, curling and virtual skiing games.



These activities are designed to get everyone involved and active in an enjoyable way. If you would like to take part or find out more about what's planned, please speak to reception who will be happy to help.

## Flower arranging

Celebrate the arrival of spring with a Spring Flower Arranging afternoon on Friday 20 March. Join us at 2pm in The Venue for a relaxed and creative session, where you can enjoy seasonal planning activities and craft your own beautiful floral arrangements to take home and enjoy. Whether you love getting hands-on with flowers or simply enjoy a social, uplifting afternoon, this event offers a welcoming space to connect, create, and celebrate the changing season. All are welcome, and the session costs £7pp. Please book at reception to reserve your place.



## George Croiala

We are excited to welcome back George Croiala for a special return performance on Monday 23 February from 6pm – 7pm in The Venue. A favourite with our audience, George will delight us once again with an enjoyable evening of live music in a relaxed and welcoming atmosphere. Tickets are £4pp, early booking is recommended, as this popular singer is sure to draw a crowd.



Our events programme is inspired by the interests of our community. If there is anything you would like to see added, please share your ideas with our Experience and Heritage Coordinator, **Emma Palin**, or email [emma.palin@belong.org.uk](mailto:emma.palin@belong.org.uk)



For more updates of special offers and events follow us on Facebook, Instagram and X.